



495 rue Delmar,  
Pointe-Claire

**23 UNITÉS/UNITS**

**4 Étages/Floors**

Type

**D**

Surface Pi.ca/sq.ft

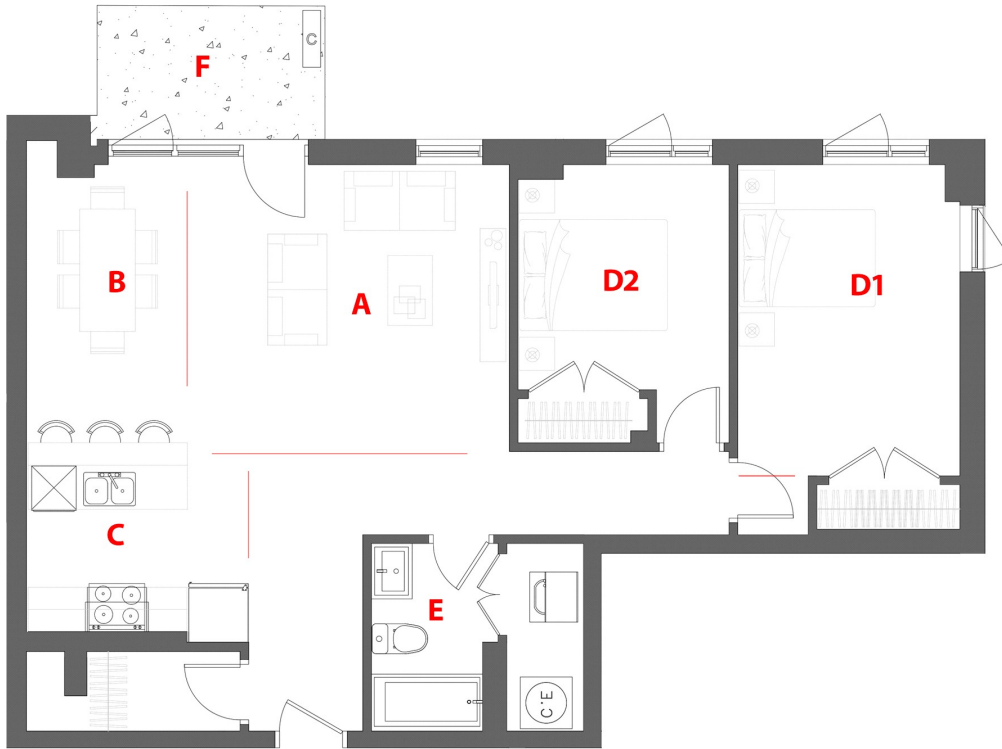
**1034**

Chambre(s)/  
Bedroom(s)

**2**

Salle de bain/  
Bathroom

**1**



- A 14'-6'' × 13'-0''
- B 7'-0'' × 13'-0''
- C 10'-0'' × 8'-6''
- D1 10'-0'' × 14'-0''
- D2 9'-6'' × 10'-0''
- E 5'-0'' × 8'-6''
- F 10'-3'' × 6'-0''



Delmar Ave



Les dimensions et superficies sont approximatives et sujettes a modifications sans preavis./All dimensions and area approximate and are subject to change without notice.